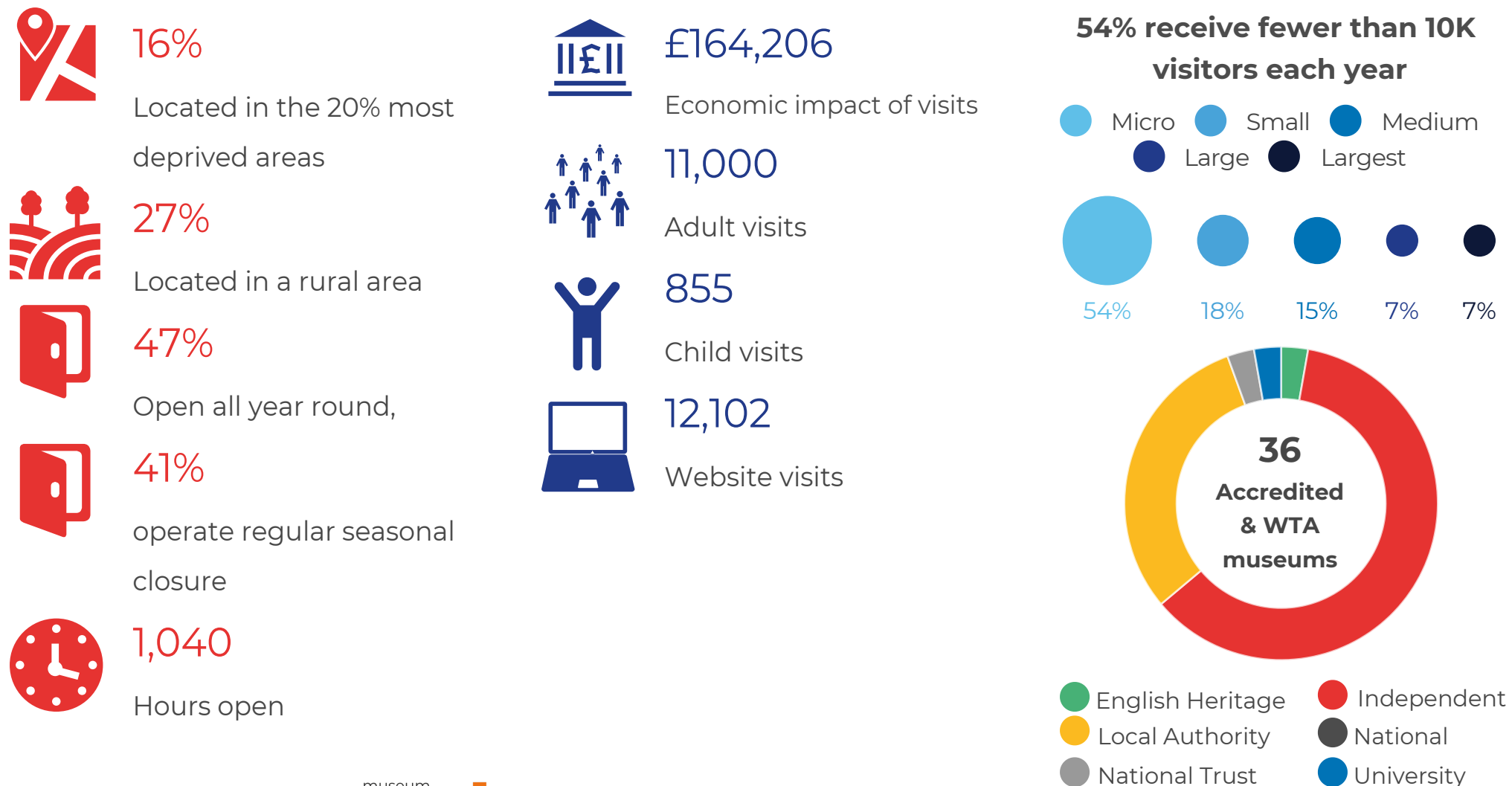


# What does a museum in Essex look like?

28 of 34 museums within scope took part. The data they provided has been extracted from regionally weighted data to be representative of all independent, local authority and English Heritage museums in the area. The values presented are annual, 2019/20.



Supported using public funding by  
**ARTS COUNCIL ENGLAND**

# What does a museum in Essex look like?

28 of 34 museums within scope took part. The data they provided has been extracted from regionally weighted data to be representative of all independent, local authority and English Heritage museums in the area. The values presented are annual, 2019/20.



£79,000

Total income



£2,626

Retail income



£830

One-off donations on-site



£11,862

Regular public subsidy



£6,000

Grants income



3\*

Number of staff FTE



30

Number of volunteers



£28,940

Value of volunteer hours

This pdf is an excerpt from the Annual Museum Survey 2020. To view the full East of England Annual Museum Survey 2020 please visit

<http://www.sharemuseumseast.org.uk/>

The Annual Museum Survey is operated by South West Museum Development hosted by Bristol City Council with support from Pearson Insight. For further information on the process undertaken for the Annual Museum Survey 2020 please contact [museum.data@bristol.gov.uk](mailto:museum.data@bristol.gov.uk)

